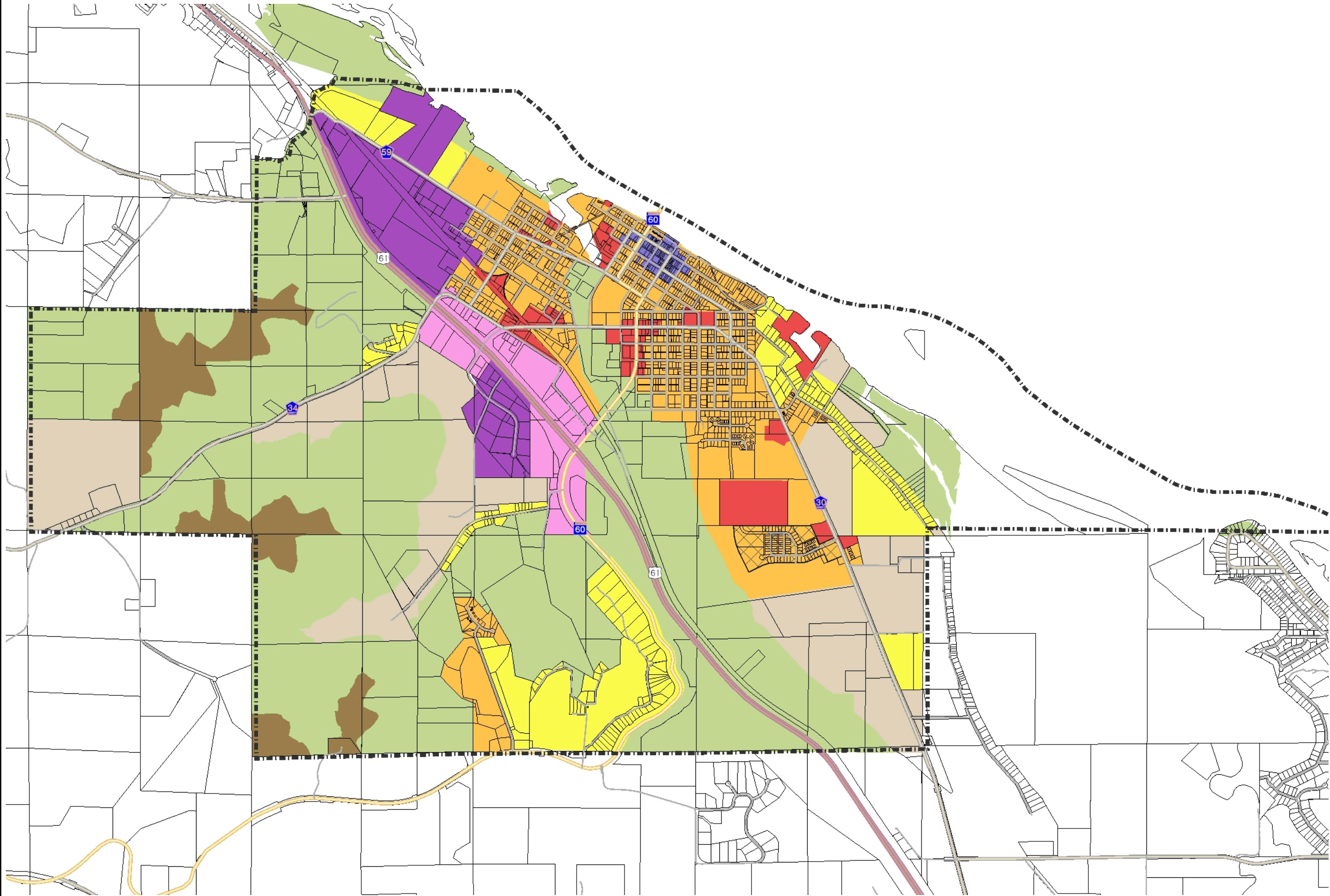




**Legend**

- City Limits
- Roads**
  - Local Roads
  - Interstate
  - US Highway
  - State Highway
  - County Roads
- Parcels 04/21/2025
- Zoning**
  - RC - Residential Conservancy
  - RR/LA - Rural/Residential/Limited/A
  - RR/GT - Rural Residential Growth
  - R1 - Low Density Residential
  - R2 - Medium Density Residential
  - Traditional Downtown Commercial
  - GC - General Commercial
  - HC - Highway Commercial
  - I - Industrial
  - PUD Overlay District Eagle Basin



**Zoning Map**



**Disclaimer:**  
 This drawing is neither a legally recorded map nor a survey and is not intended to be used as one. This drawing is a compilation of records, information, and data located in various city, county, and state offices, and other sources affecting the area shown, and is to be used for reference purposes only. The City of Wabasha is not responsible for any inaccuracies herein contained.

0 2,107 Feet

