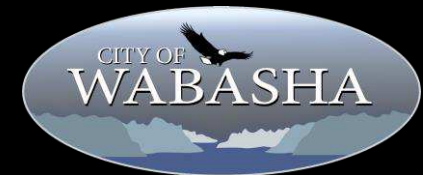


City of Wabasha

PARKS & TRAILS MASTER PLAN

CITY COUNCIL MEETING

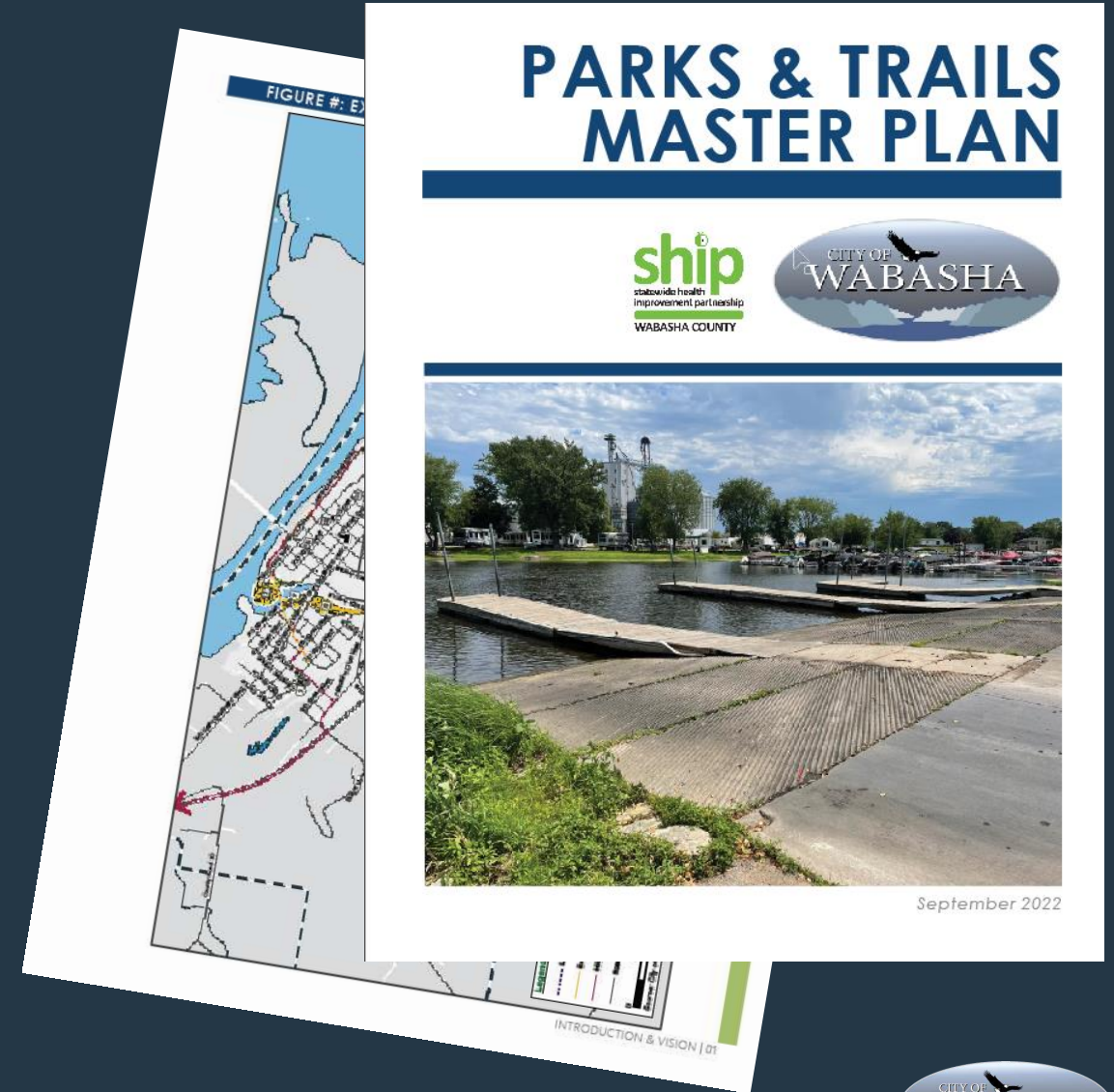
November 1, 2022



Project Background

Several Previous Planning Efforts that helped to inform this plan:

- 2016 Comprehensive Plan & Parks and Trails Public Survey
- 2019 Park System ADA Compliance Review
- 2021 Safe Routes to School Survey
- 2021 Parks and Trails Public Survey



Process & Purpose



“Provide a framework for the City of Wabasha to enhance existing park and trail facilities, and identify future expansion and enhancement opportunities to meet the community’s current and future recreational needs”

Inventory & Analysis Existing Inventory

Figure X: Park Inventory

City of Wabasha		Acres	Distance (mi) to Wabasha (City Hall)	Basketball hoops/court	Tennis courts	Pickleball courts (striped for)	Splash pad	Pool	Backstop/softball/baseball	Unprogrammed Green Space	Soccer/Football Field	Shelter (enclosed)	Open air shelters	Toilet facilities	Dog Park	Playgrounds	Bike/walk Trail	Volleyball court	Parking	Skate Park	Grills	Hockey Rink	Campgrounds
City of Wabasha																							
Athletic Field	208 Hiawatha Dr W	16.2	0.8	1					3	1		1	0	3		1	1						1
Beach Park	700 Main St W	4.5	1.2										2	1		1	1						
Bruegger Park	1035 7th St W	1.7	1.7							1			1	1									
Cannon Park	600 Hiawatha Dr. E	0.7	0.2							1													
Dennis Pfeilsticker Memorial Park	812 9th St E	1.7	0			1	1					1	3	1		1							
Eagle Basin Park Area	Majestic St and 21 St	1.0	1																				
Heritage Park	Walnut Ave and Main St W	0.4	0.9											2									
Izaak Walton Park	Maiden Ave and 5th Grant Blvd	5.5	1.1						1			1	2	1									
Malone Park	515 Church Ave	3.9	1.1						1			1	3	3									
Marcou Park	1105 Bailey Ave	4.1	0.8						1	1													
Popcorn (Dury) Park	171 Pembroke Ave	0.1	0.7																				
Schmidt Park	Market St E and 2nd St E	0.7	0.4							1													
Veteran's Memorial Park	109 Hiawatha Dr E	0.4	0.6																				
Total		40.9		1	0	0	1		4	7		4	11	12									
Nearby School Parks / Playgrounds																							
St. Felix School	130 3rd St E	2.5	0.6	2					1			2		1									
Wabasha Kellogg Public Schools	2113 Hiawatha Dr E	33.0	1.4	2					4	1	1	2	1										
Total (Including Schools)		35.5		4	0	0	0		5	1		2	2	2									



Size

Land Cover

Active Recreational Facility

Passive Recreational Facility

Buildings / Shelters

**All facilities are handicap accessible*

Reservations

Pedestrian Accessibility

Parking

Utility and Capacity Issues

Frequency of Use

History

Handicap Accessibility Needs

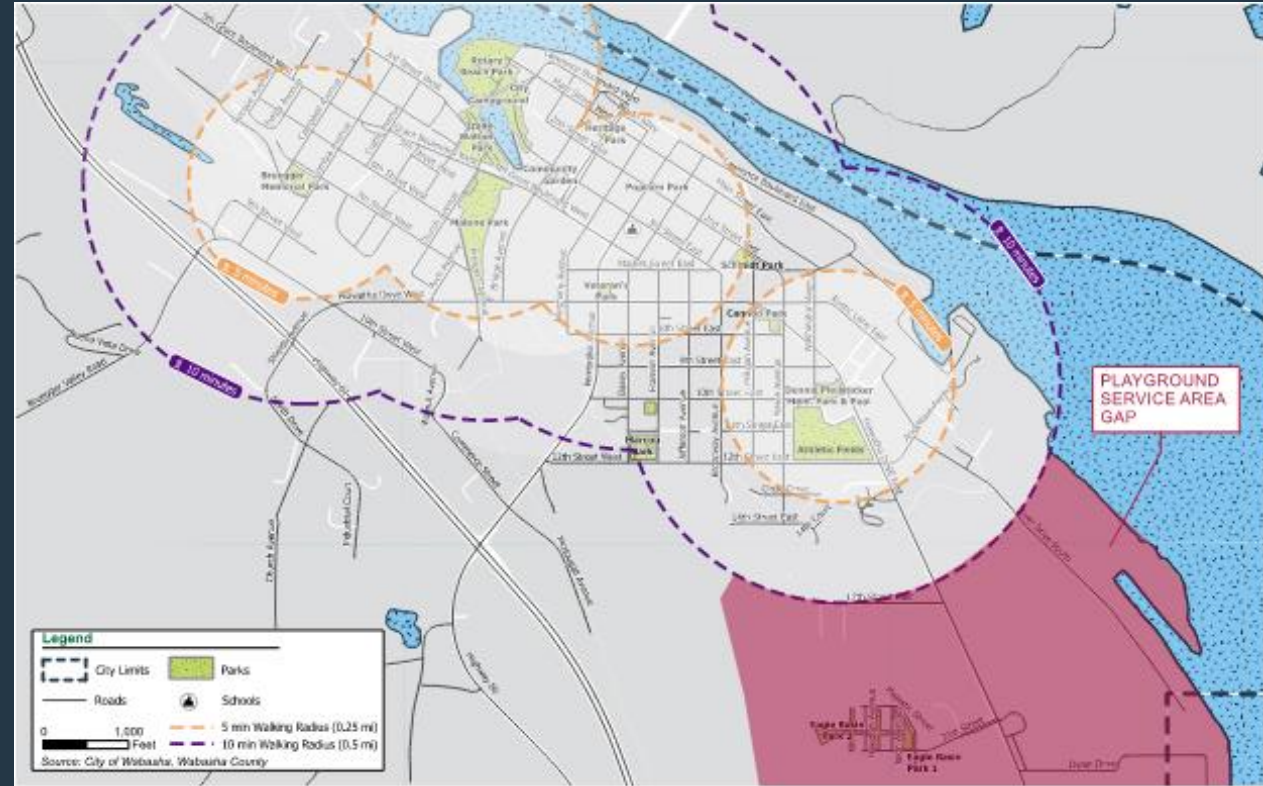
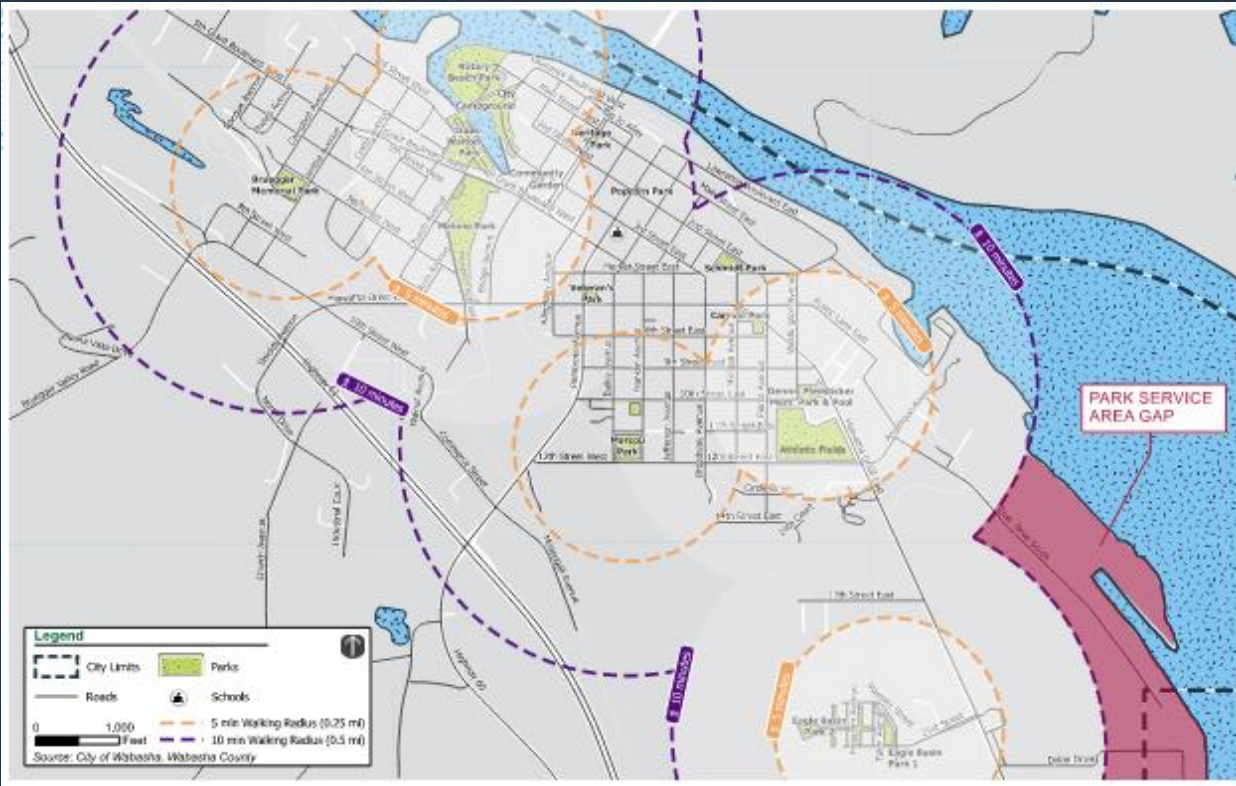
Adequate parking is located in the two public parking lots under the bridge

City water, sewer, and electricity are available at the park

High

Heritage Park is located under the approach to the State Highway 60 Bridge. Heritage Park was created in 1988 when the new bridge was opened. The land is owned by the State (Department of Transportation). The park is used for community gatherings and public events such as the local Arts Board (River Junction Arts Council) summer concert series.

Inventory & Analysis Service Area Mapping



Inventory & Analysis NRPA Metrics

Figure X: Miles of Trail per Population

	All Agencies	Less Than 20,000	Wabasha
Median	14.0	3.0	3.1
Lower Quartile	5.0	2.0	
Upper Quartile	39.0	10.0	

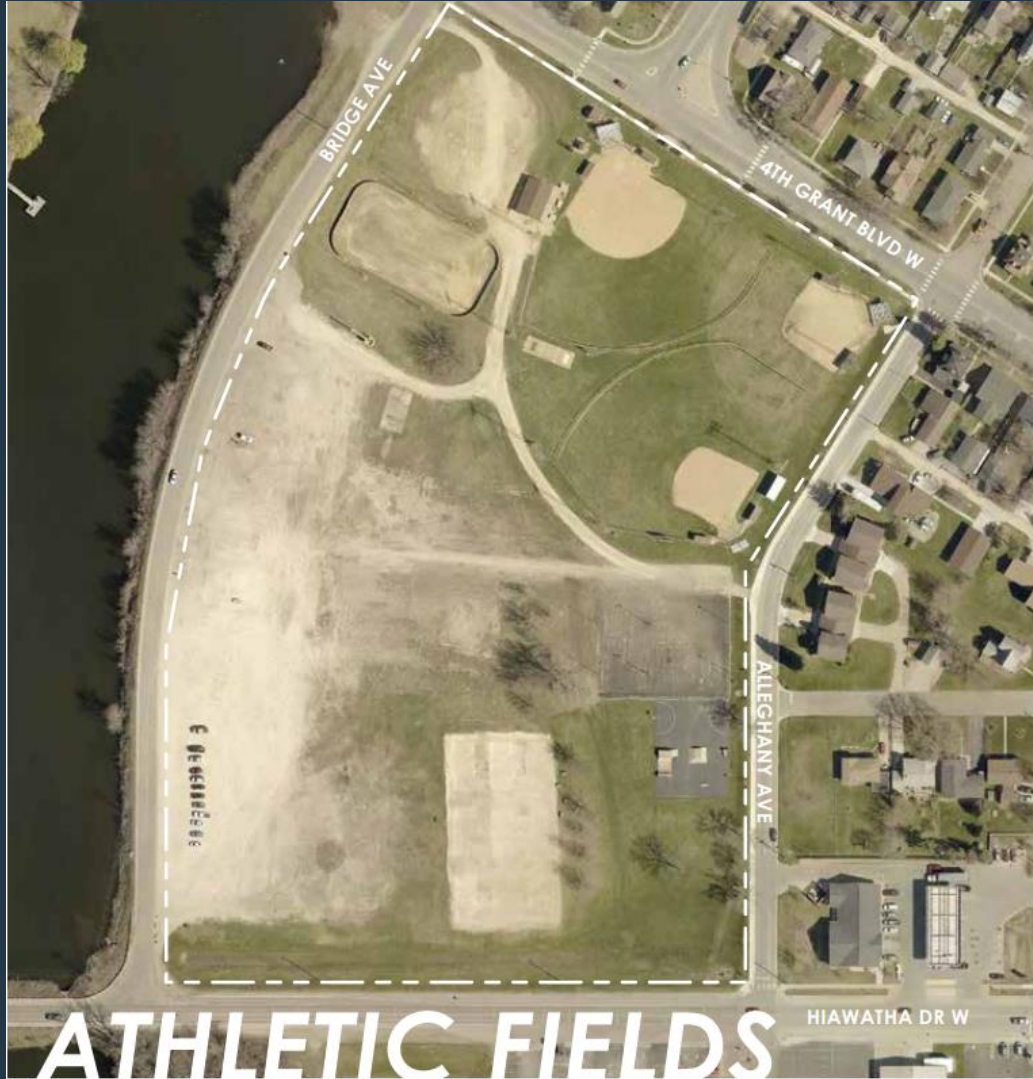
Figure X: Park Acres Per 1,000 Residents

	All Agencies	Less Than 20,000	Wabasha
Median	10.4	12.9	16.2
Lower Quartile	5.1	5.2	
Upper Quartile	18.2	21.7	

Figure X: Park & Rec Facilities Per Population

Type of Facility	Median Number of Residents Per Facility		Wabasha	
	All Agencies	Less Than 20,000	# of Facilities Needed to Meet NRPA Metrics	# of Existing Facilities
Playgrounds	3,750	1,986	1.3	5
Basketball Courts	7,403	3,750	0.7	1
Tennis Courts (outdoor only)	5,608	2,723	1.0	0
Baseball Fields - Youth	7,000	3,107	0.9	2
Softball Fields - Adult	14,302	5,667	0.5	2
Multi-Purpose Fields	9,622	4,362	0.6	6
Dog Parks	43,586	11,100	0.2	0
Softball Fields - Youth	11,339	5,339	0.5	0
Baseball Fields - Adult	20,127	7,954	0.3	0
Outdoor Swimming Pool	38,000	8,637	0.3	1
Tot Lots	11,983	6,642	0.4	0
Community Gardens	30,140	8,773	0.3	1
Soccer Field - Youth	7,382	3,504	0.8	1
Multi-Purpose Synthetic Field	39,736	12,962	0.2	0
Outdoor Ice Rink	16,887	7,997	0.3	1
Skatepark	53,708	11,100	0.2	1
Pickleball Courts	14,714	3,446	0.8	0
Wabasha Population = 2,655				

Athletic Park Relocation

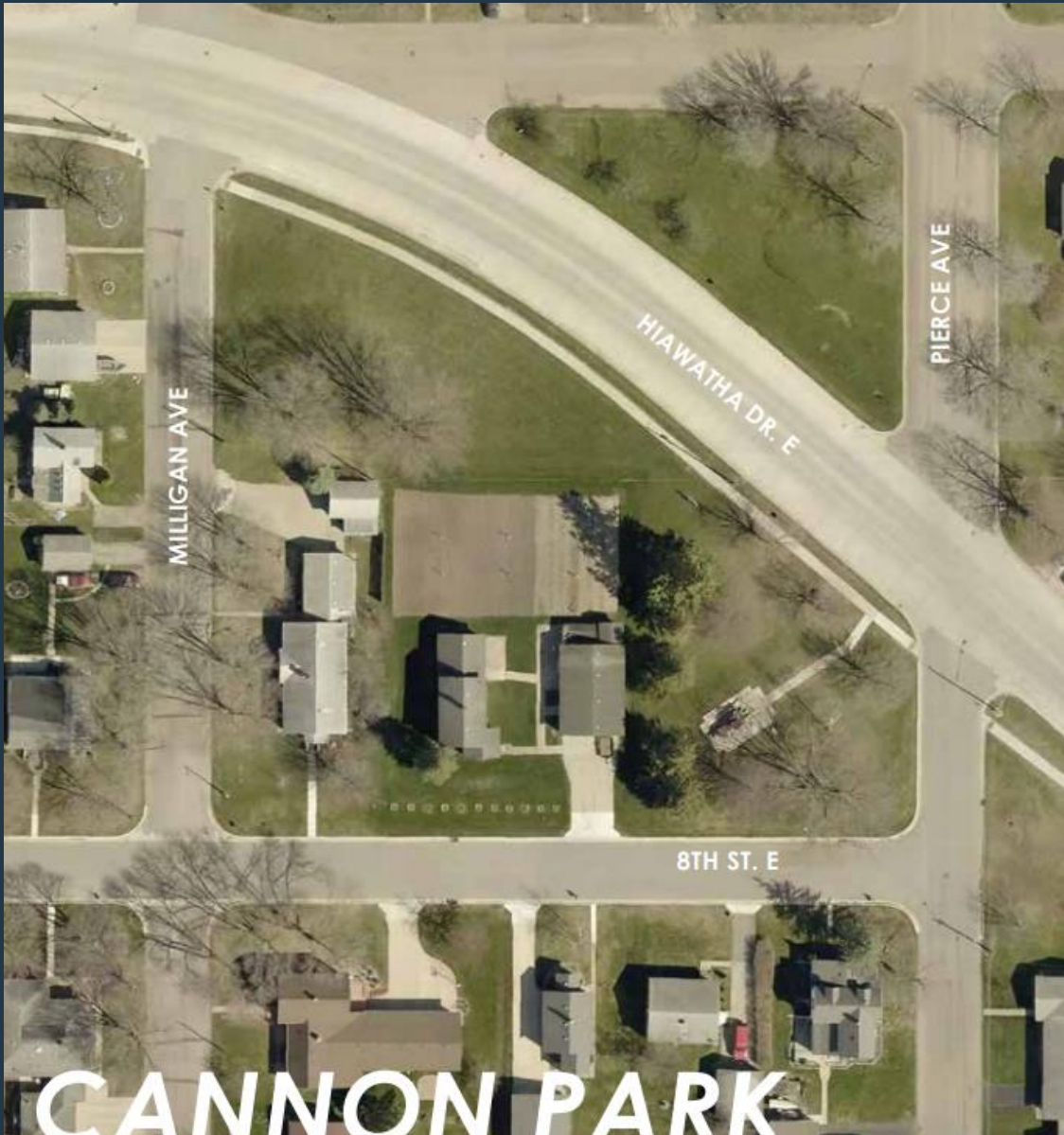


16.2 Acres



7.6 Acres

Cannon Park



- Generally Passive Recreation except Cannon feature
- Recommendation to relocate Cannon to Veteran's Park and sell Cannon Park property.
- Reduction of 0.7 Acres of maintenance area

Input Gathering 2021 Public Survey

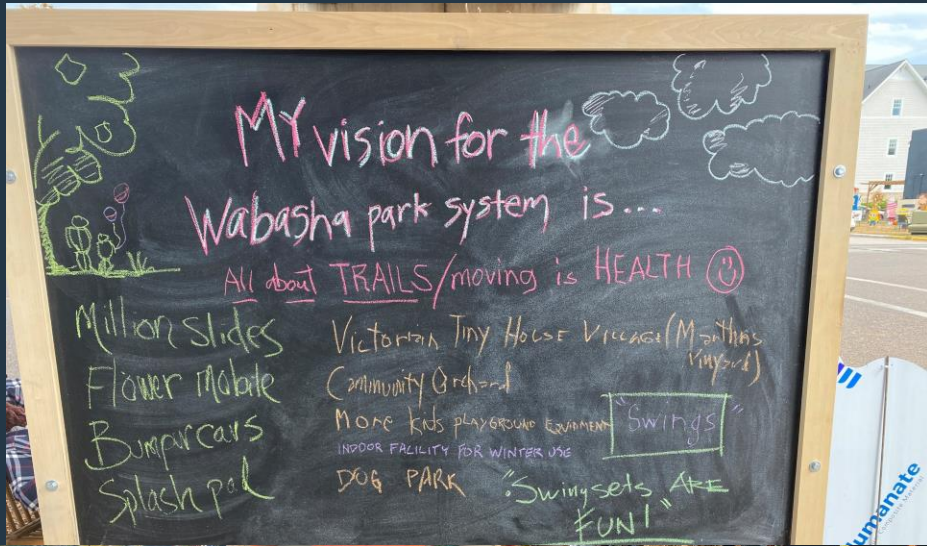
What People Want	
Item	# of Responses
Bike/Walking Trails	28
Dog Park	17
Tennis Courts	11
Pickleball Courts	9
More Swings	9
Lawrence Blvd./Riverfront Usage	6
Handicap Accessible Playground	5
Drinking Water at Parks	4
Park at Eagle Basin	4
Seating Around Playground	4
Organized Activities	4
Fish Cleaning Station	3
Map of trails/paths, playgrounds	3
Kayak/Canoe Trail in Slough	2

What Needs to Improve?	
Item	# of Responses
Playgrounds/Playground Equipment	24
Restrooms (more, cleanliness, updated)	16
Docks (More)	11
Cleaned up dog poop	10
Dogs on leash	6
Dredge Slough in Malone Park	5
Basketball court	5
Flowers/Plants (aesthetics of parks)	4
Parking (General and by boat launches)	4
Electric at Beach Park	3
Benches	3
Lighting	2
Pollinator Habitat	2

Key takeaways:

Responses show strong interest in more trails & connectivity, dog park, sport courts, playgrounds and restrooms

Input Gathering Septoberfest Pop Up



1. All-Abilities/Inclusive Playground (20)
2. Athletic Park Relocation Project (17)
3. Marcou Park Campground (10)
4. Wabasha to Kellogg Trail Alignment Study (10)
5. Trail Connectivity (7)
6. Enhanced Pedestrian Connectivity & Safety (7)
7. New Neighborhood Park (1)



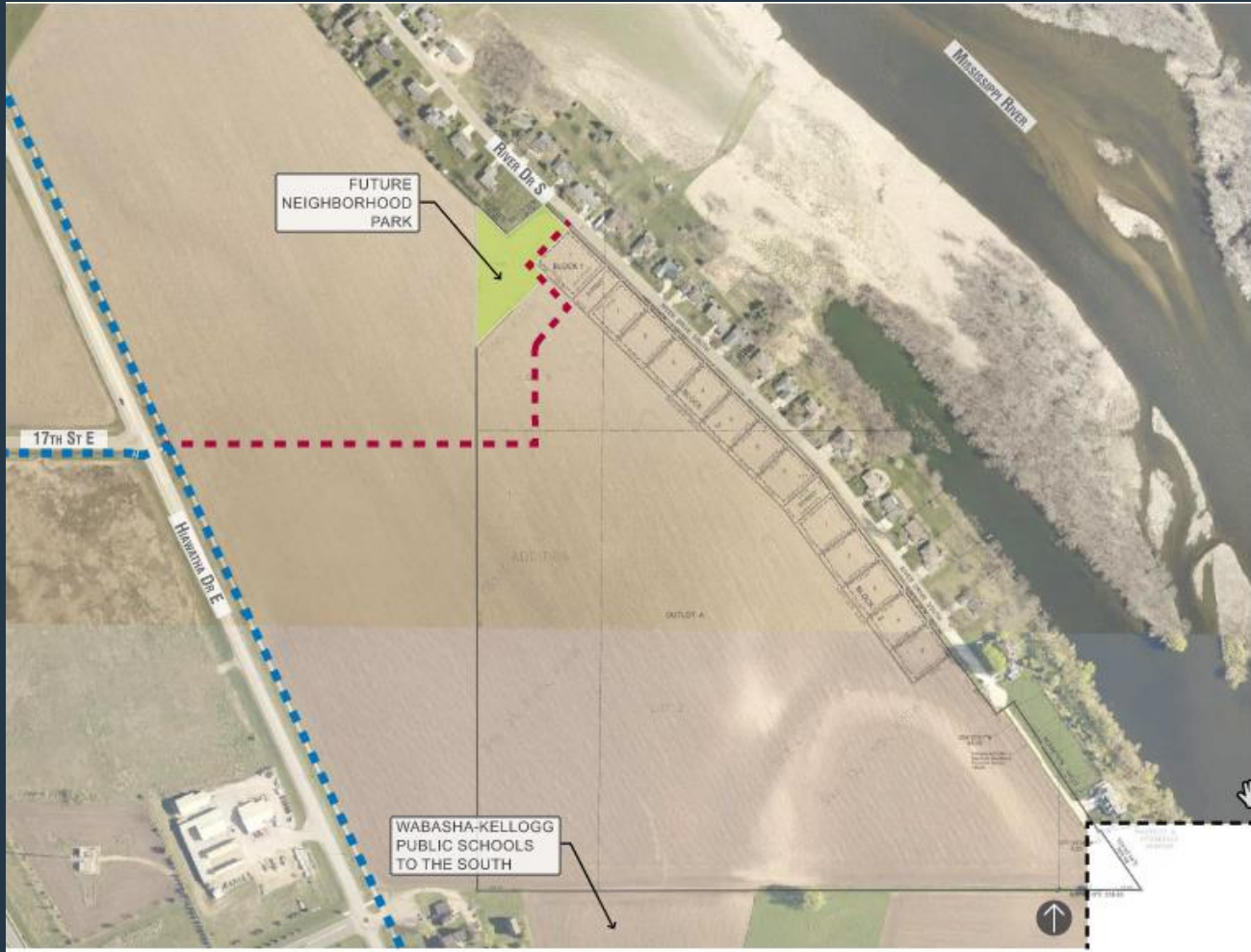
Recommendations



Recommendations Broken Into Four Categories:

1. Park System-Wide Recommendations
2. Location Specific Park Recommendations
3. Trail System & Pedestrian Safety Recommendations
4. Opportunity Driven Recommendations

Recommendations Park System



#1 - Increased Distribution of Amenities Throughout the Community:

1. Addition of playground at Eagle Basin Park
2. Addition of basketball court at Bruegger Park
3. Development of neighborhood park along River Drive South

Recommendations Park System



#2 - Increased Diversity of Amenities:

1. Addition of an Inclusive/All abilities playground
2. Dog Park
3. Campground at Marcou Park
4. Mountain Biking/Hiking trails in the bluffs



Recommendations Park System



#3 - Improve Accessibility and ADA Compliance:

1. Replacement of deficient sidewalks and trails
2. Upgrades to restroom facilities
3. Enhancement and upkeep of playground access & surfacing
4. Improvements at the Pool (lift chair, locker rooms, adaptive swing)

Recommendations Park System



#4 - Enhance and Expand Recreational Trail System:

1. Fill gaps in trail connectivity
2. Recommendations per Trail System Improvements section

Recommendations Location Specific Parks

BRUEGGER PARK IMPROVEMENTS



1 PLANT NEW SHADE TREES:

BUDGET EST. = \$1.8K
TIMELINE = SHORT-RANGE (1-3 YEARS)

In an effort to enhance the existing tree cover at the park and provide more shade for park users, the city should plant 3 new shade trees in the vicinity of the playground and picnic shelter. Estimated cost assumes trees provided and installed by a landscape contractor.



Existing picnic shelter

2 RELOCATE SAND VOLLEYBALL COURTS (9):

BUDGET EST. = \$130K
TIMELINE = MID-RANGE (3-7 YEARS)

With the relocation of the Athletic Park and subsequent redevelopment of the old park site, the city will lose its sand volleyball courts. Bruegger would be able to accommodate up to nine new courts and provide a new home for league play.



Existing sand volleyball courts at the Athletic Park to be relocated

3 ADD HALF BASKETBALL COURT:

BUDGET EST. = \$40K
TIMELINE = LONG-RANGE (7-10 YEARS)

Currently the only basketball court in the City is located at the Athletic Park slated for relocation in 2023. The relocated park adjacent to City Hall will include a new court but leaves this area of the City with no local court. A new half court here would help fill that gap left by the park relocation.



Multi-use field (Replace w/ volleyball courts)

IMPROVEMENT STRATEGIES | 03

03 | IMPROVEMENT STRATEGIES

- 2-5 Recommendations for each city park identified based on feedback from the city, steering committee, and public
- Prioritized into Short, Mid, and Long-Term Recommendations
- Improvements focused on both the addition of amenities, and maintenance

Recommendations Location Specific Parks

FIGURE 20: MALONE PARK IMPROVEMENTS



1 REPLACE DEFICIENT SIDEWALKS AND TRAILS:

BUDGET EST. = \$22K

TIMELINE = SHORT-RANGE (1-3 YEARS)

Portions of the sidewalk and trail system in Malone Park are in need of repair due to cracking and other issues. Approximately 1,600 square feet of deficient sidewalk and trail facilities should be removed and replaced, and additional sidewalk installed to provide accessible connections to park amenities. These improvements were previously identified in a 2019 DNR grant submittal, included as an appendix to this report.

2 RELOCATE PLAYGROUND:

BUDGET EST. = \$30K

TIMELINE = MID-RANGE (3-7 YEARS)

The playground at Marcou Park sits at a low elevation adjacent to the river leading to periodic flooding, ultimately causing ongoing maintenance issues and periods when the playground can't be used. To combat these issues, the existing playground equipment should be relocated to a higher elevation closer to the parking lot. Surfacing for the new playground location should be engineered wood fiber, with appropriate ADA accessible entries.



Sidewalk and trail facilities (Replace deficient facilities)

3 UPDATE RESTROOM FACILITIES:

BUDGET EST. = TBD

TIMELINE = MID-RANGE (3-7 YEARS)

Malone Park's restroom facilities are currently out of service due to maintenance. Restroom improvements were previously identified as a need in a 2019 DNR Grant Submittal, included as an appendix to this report.



Existing playground equipment, (Relocate to higher ground)

4 RELOCATE DISC GOLF COURSE:

BUDGET EST. = \$15K

TIMELINE = MID-RANGE (3-7 YEARS)

Based on future development of Marcou Park, the current disc golf course will require relocation. Malone Park offers open space with varying vegetative cover that could be well suited to support a 9-hole disc golf course. Disc golf is often targeted as an opportunity for floodplain areas due to the minimal infrastructure involved in its implementation. Timing of this opportunity should be coordinated with any future development of Marcou Park. Cost estimate provided assumes relocation of existing standards and signage, and selective tree removals.



Restroom facilities (Update)

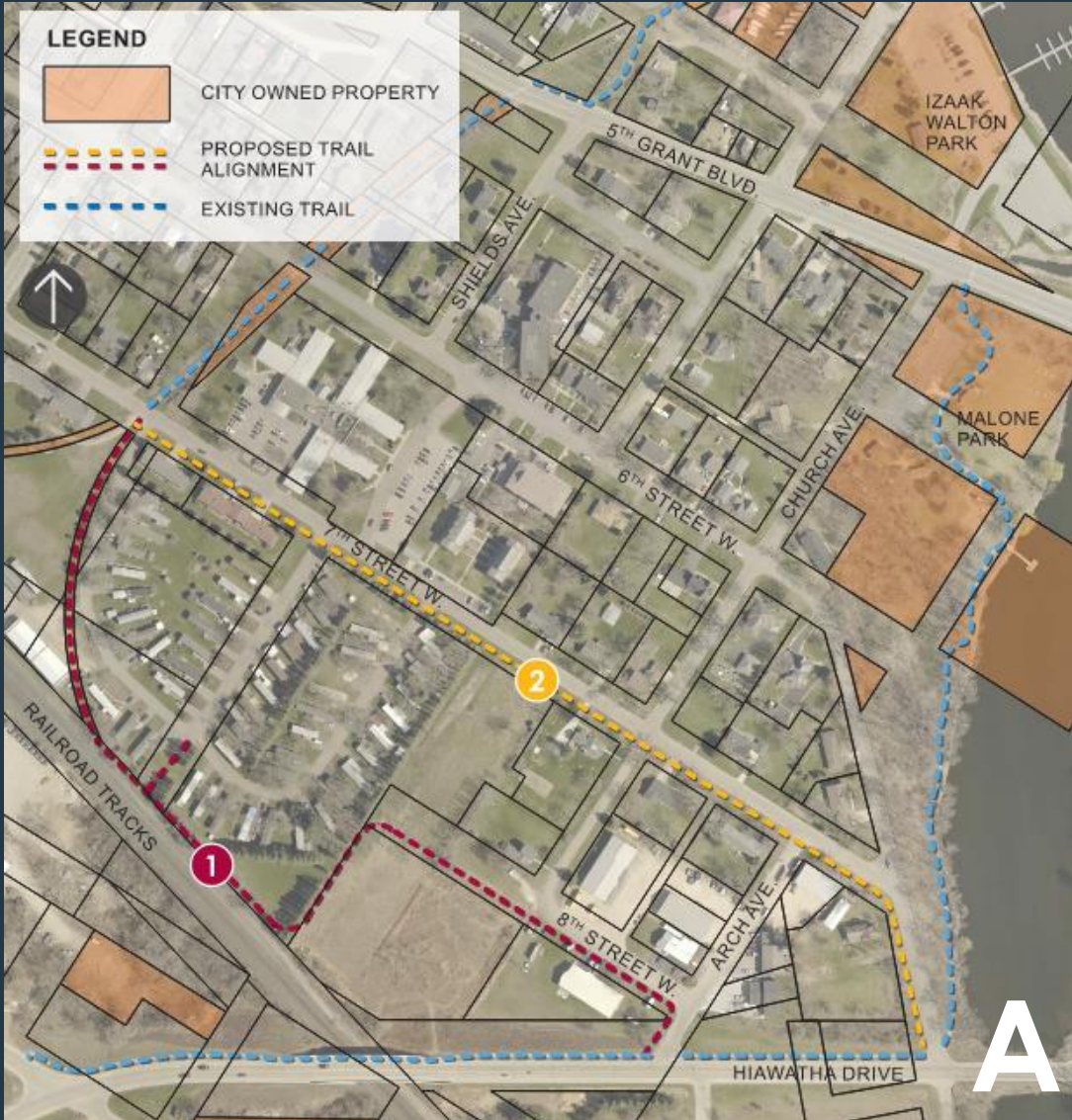
Recommendations Trails & Ped. Safety



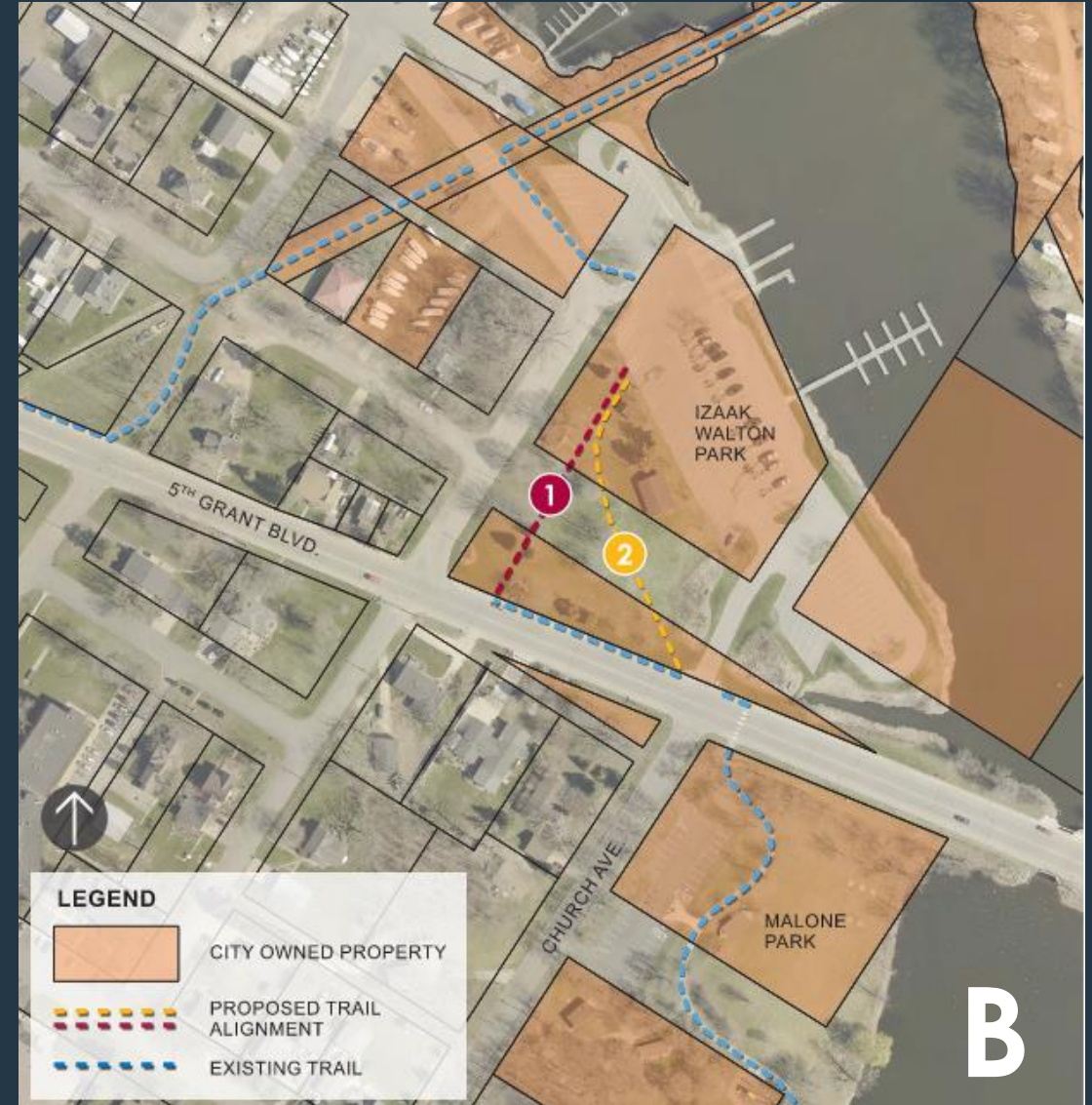
Trail & Ped Safety Recommendations Include:

- Four priority trail connections
- Enhanced pedestrian crossing on Hiawatha
- Expanded sidewalk connectivity

Recommendations Trails & Ped. Safety



Estimated Cost: \$127,000



Estimated Cost: \$20,000

Recommendations Trails & Ped. Safety



Estimated Cost: \$148,000

D

Recommendations Trails & Ped. Safety



Enhanced RRFB
Pedestrian Crossing on
Hiawatha Drive.

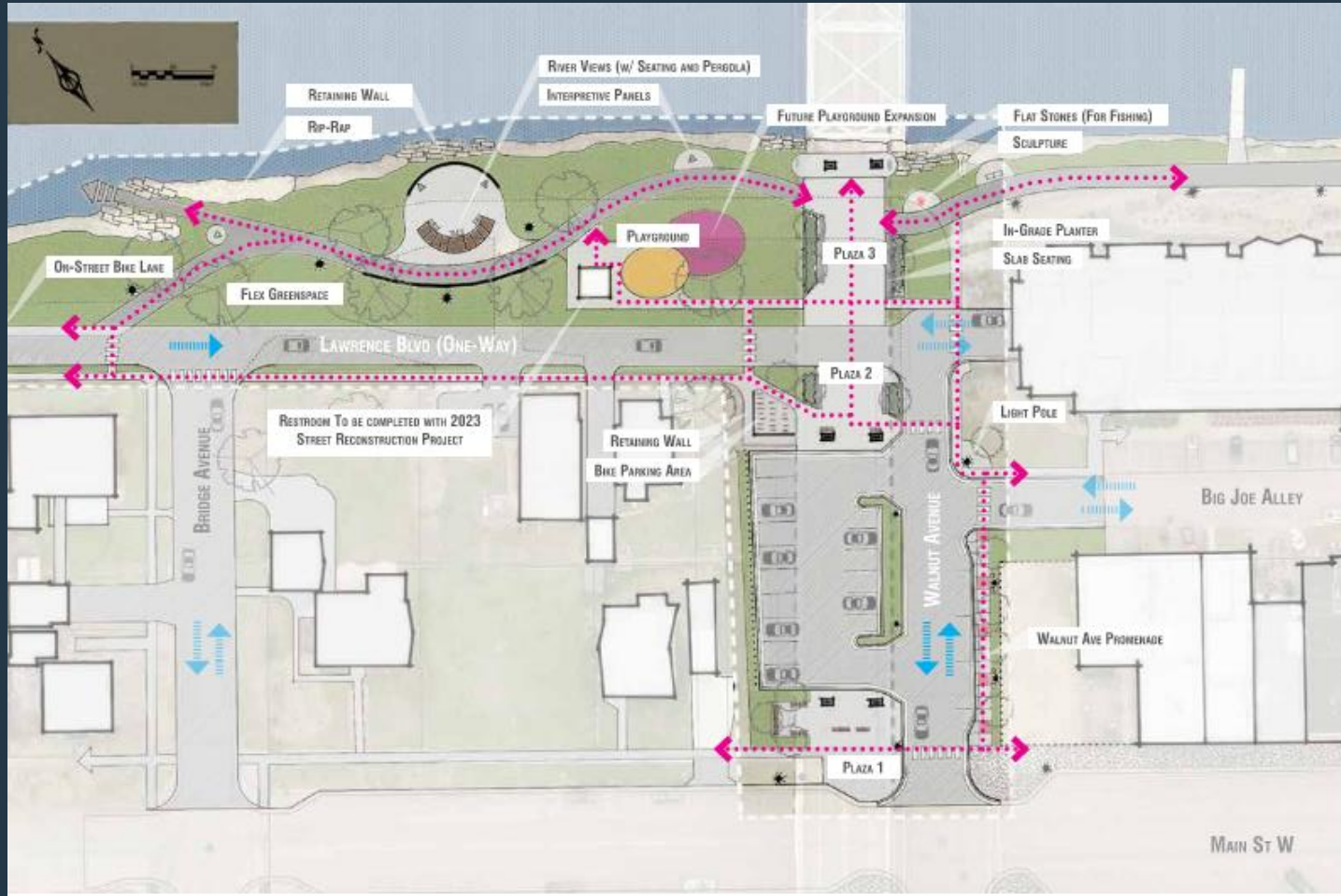


Recommendations Trails & Ped. Safety



Increase sidewalk connectivity throughout the community

Recommendations Opportunity Drive

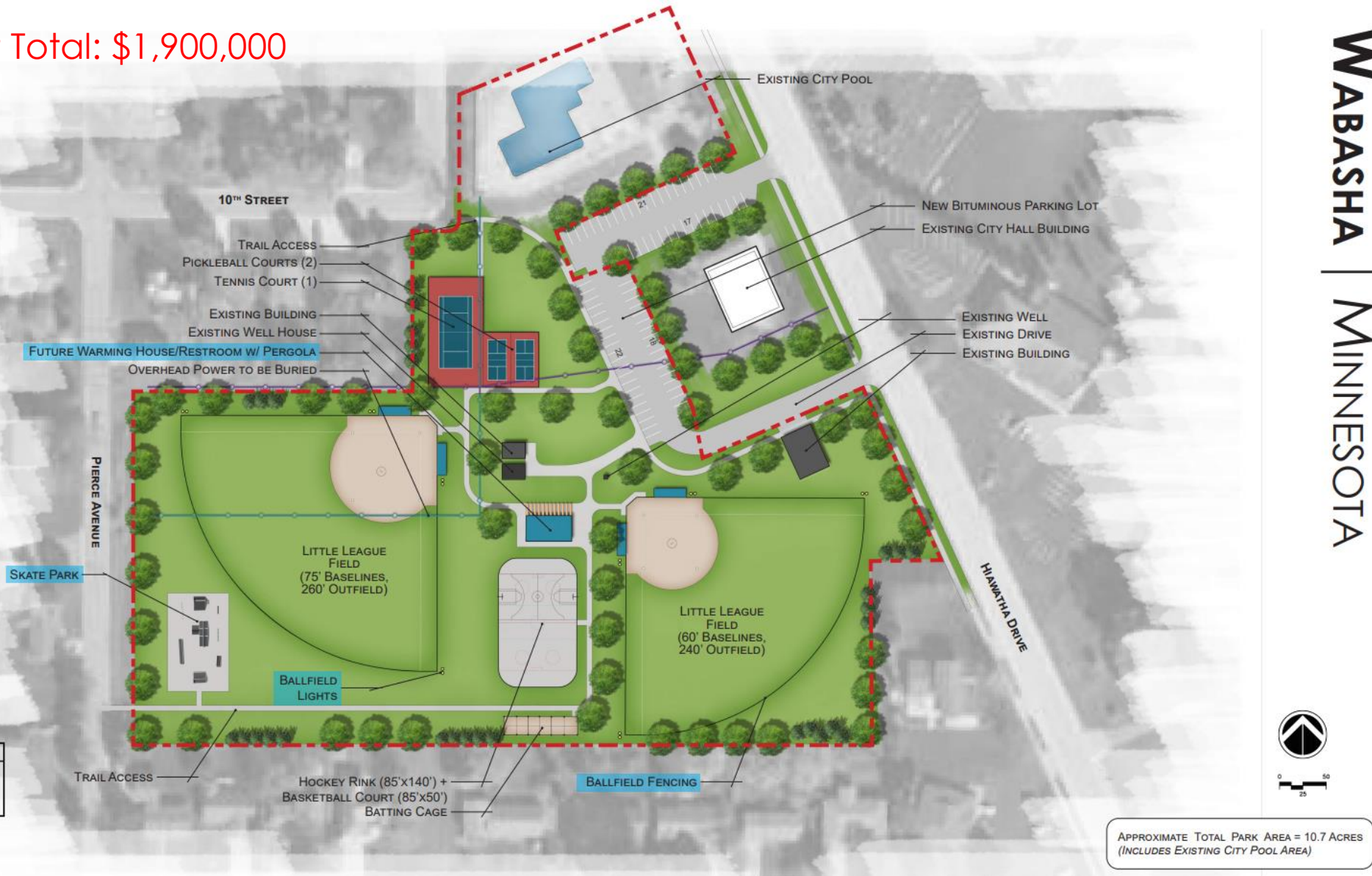


No timeline associated with projects. Projects to be implemented as outside funding allows

- Downtown Riverfront Plaza
- Mountain Biking & Hiking Trails

Athletic Park Relocation

Project Total: \$1,900,000



Financing Strategy

- Priority projects will be included in 10-year capital plan. Every year, the City of Wabasha has a limited budget to expend on capital improvement items like streets, equipment, city buildings and parks.
- Park projects made possible through matching grants to city investment.
- All-abilities playground and dog park projects for public-private philanthropy and led by a small steering committee.
- Trail improvements included in City's capital borrowing plan and ideal for future grant applications or in coordination with other major projects.
- Sidewalks addressed through street improvement projects or through Capital Improvement.
- Plan helps provide a guide but not everything will be accomplished.

All of this will require support from Council, Parks Board, and residents.



Questions?

Jonathan Nelsen

Landscape Architect, Bolton & Menk

Jonathan.nelsen@bolton-menk.com